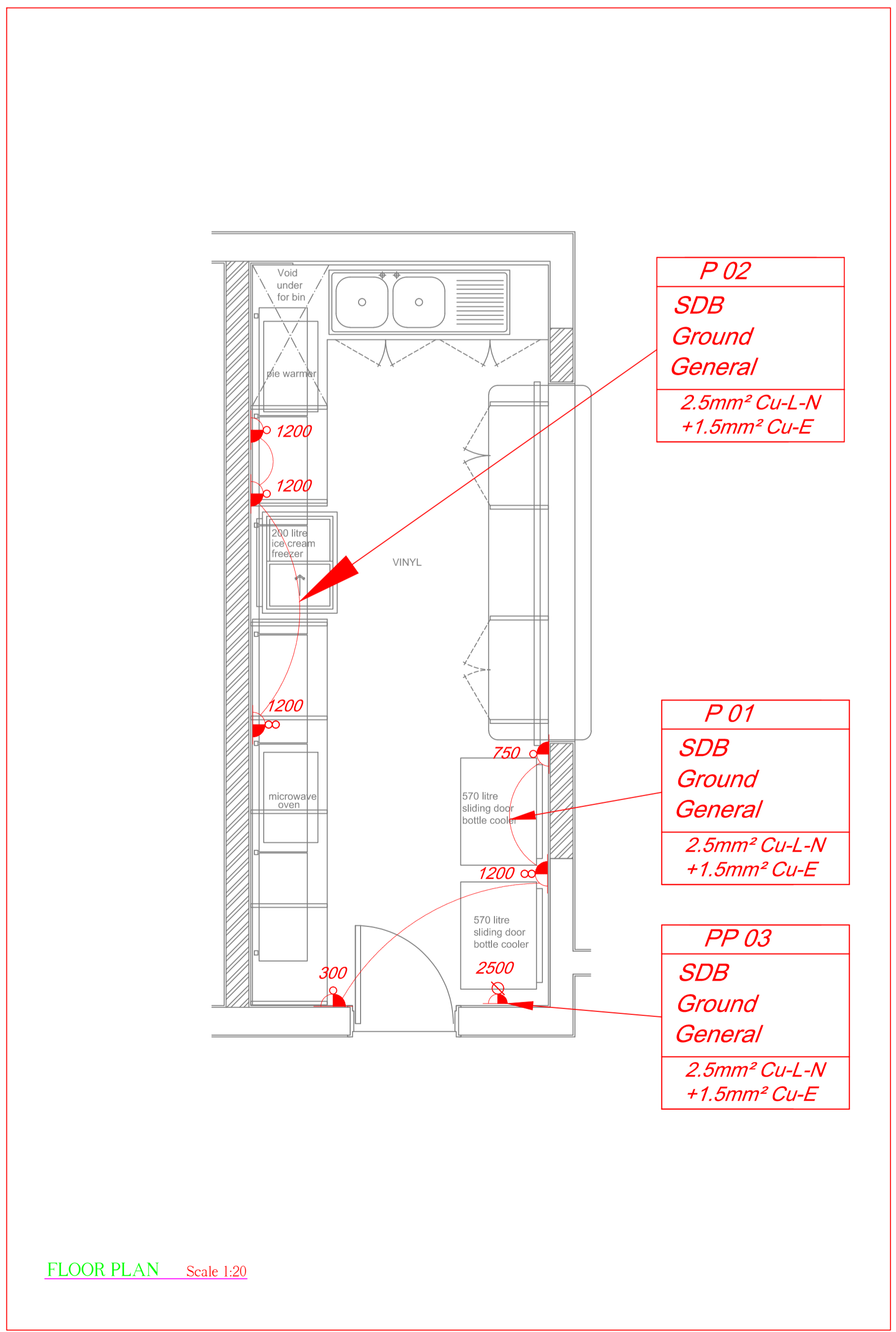
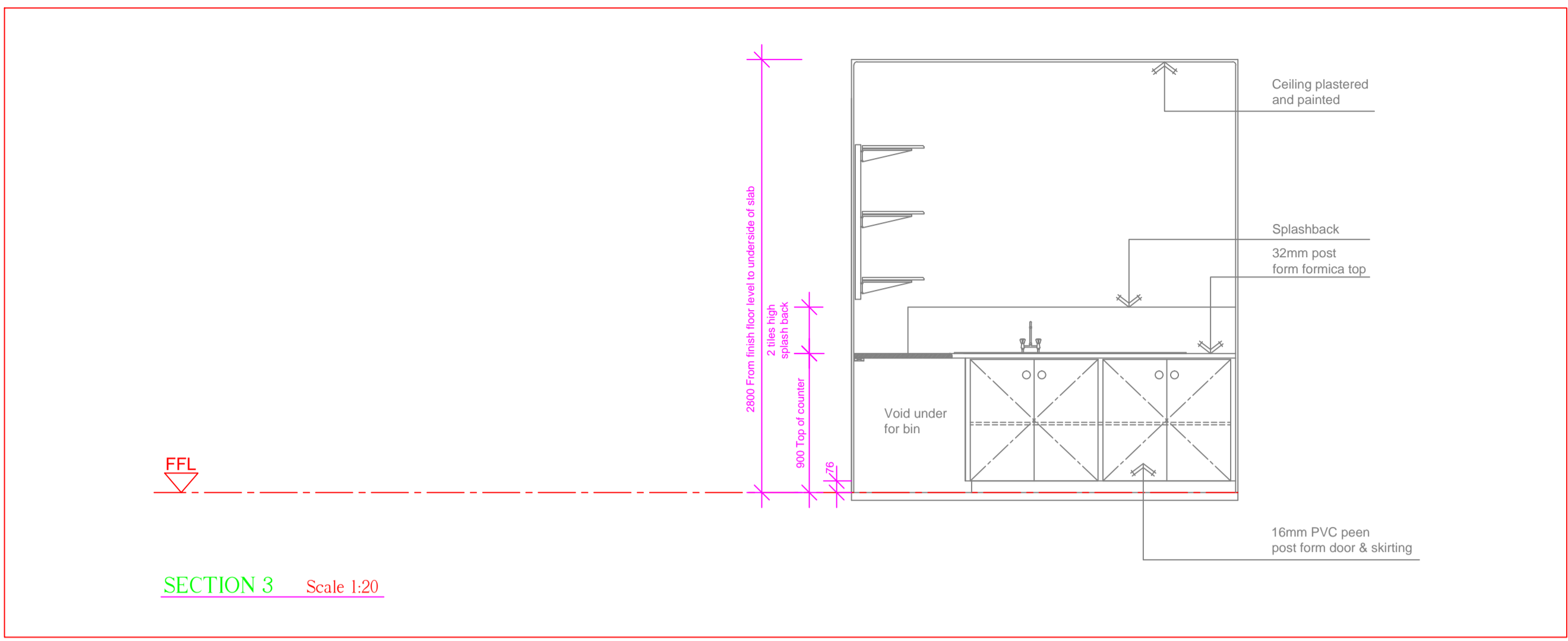
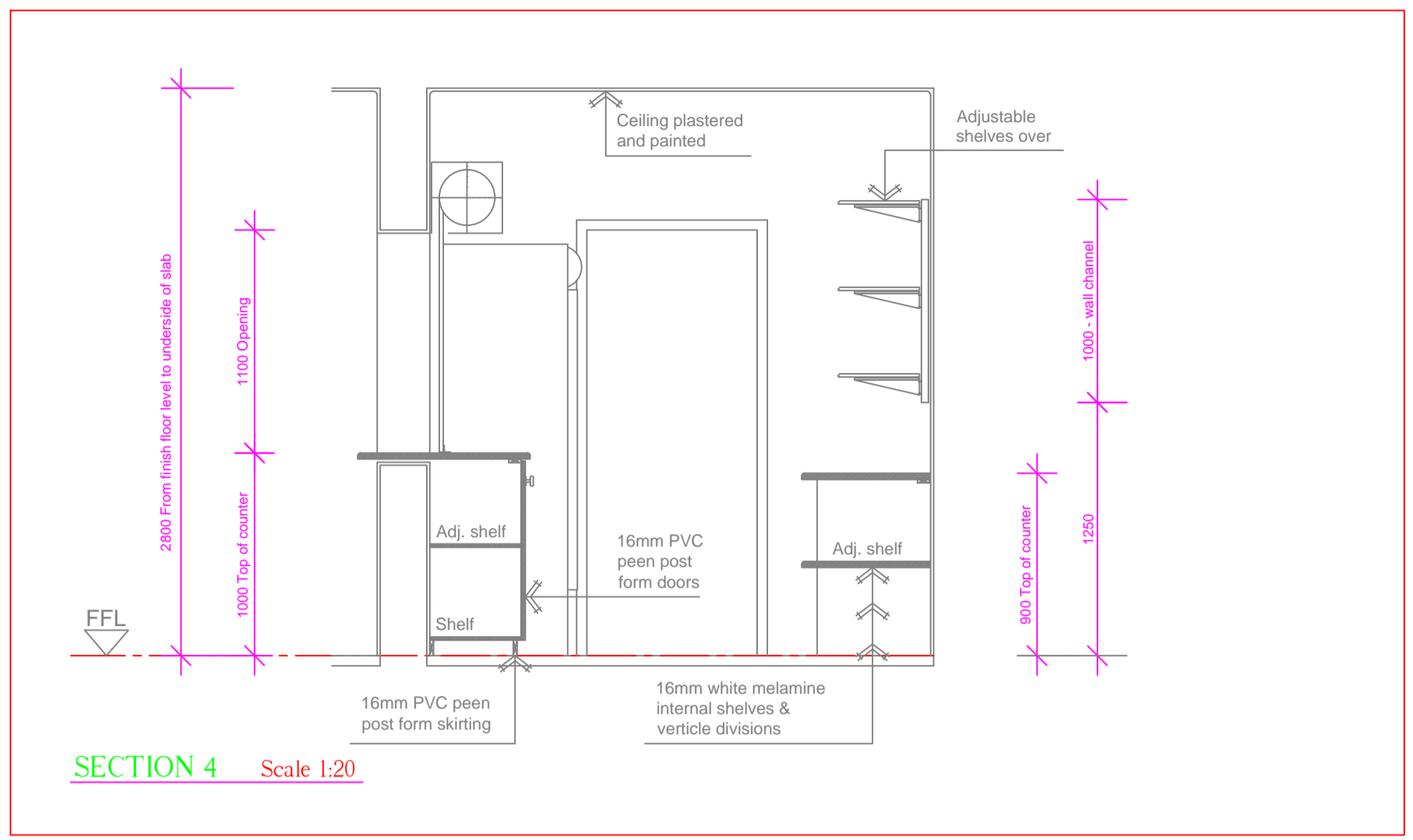


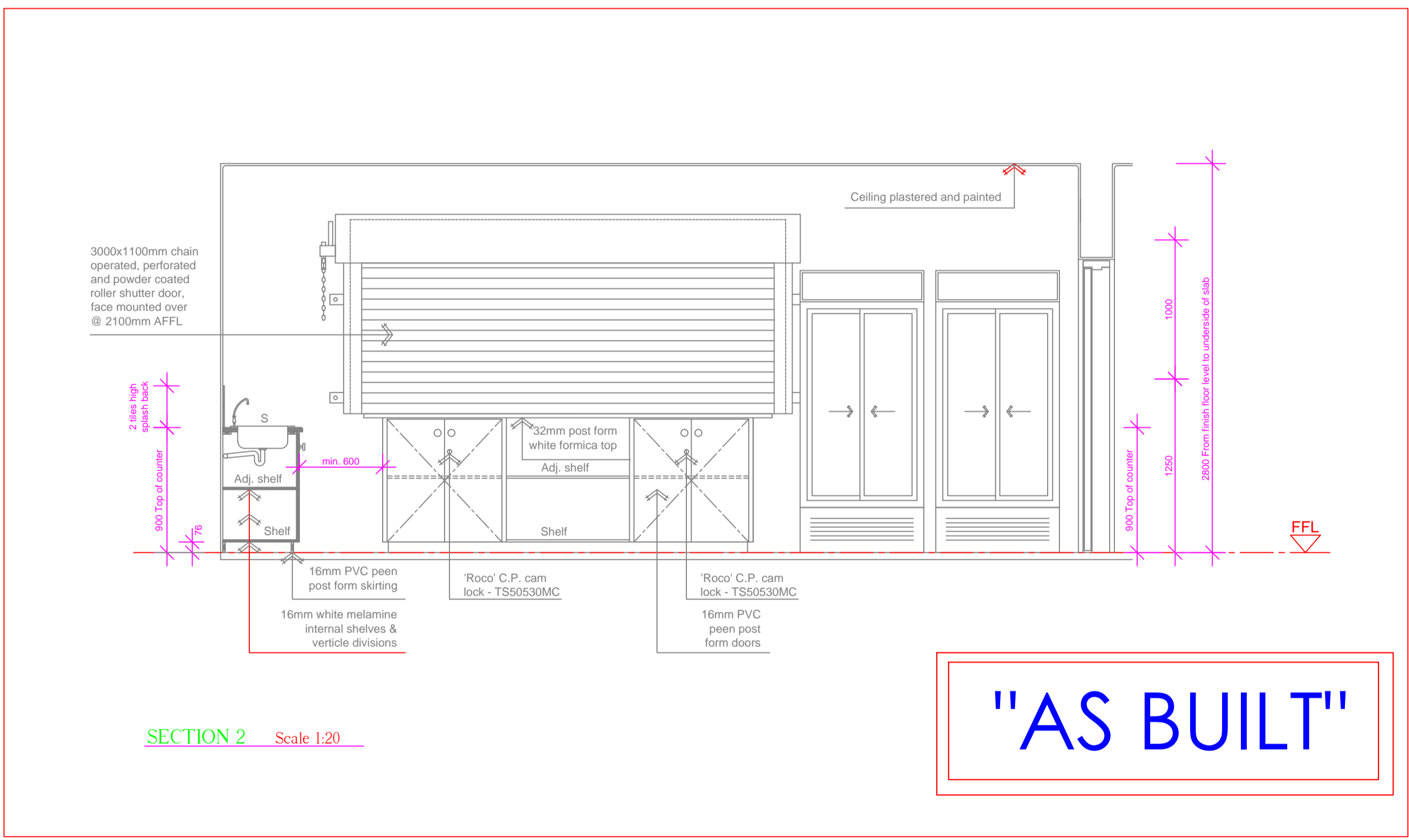
NOTES :  
 ALL RELEVANT DETAILS, LEVELS, DIMENSIONS TO BE CHECKED ON SITE BEFORE COMMENCEMENT OF WORK. SEE SYMBOL PAGE FOR IDENTIFICATION OF SYMBOLS.  
 THE ELECTRICAL INSTALLATION SHALL BE CARRIED OUT IN ACCORDANCE WITH THE LATEST EDITION OF SANS 0142 AND THE REQUIREMENTS Laid DOWN IN THE TECHNICAL SPECIFICATION OF EMAC (PTY) LTD.  
 DIE ELEKTRESE INSTALLASIE SAL UITGEVOER WORD VOLGENS DIE NULSTE UITGAVE VAN SANS 0142 EN DIE STANDAARD TEENISE SPESIFIKASIE VAN EMAC (PTY) LTD.  
 OUIEERSREK IS GEVERSTIG IN EMAC (PTY) LTD. KRAGTINGS DIE WET OP OUIEERSREK (WET 46 VAN 1976) COPYRIGHT IS VESTED IN EMAC (PTY) LTD. IN TERMS OF THE COPYRIGHT ACT (ACT 98 OF 1978)



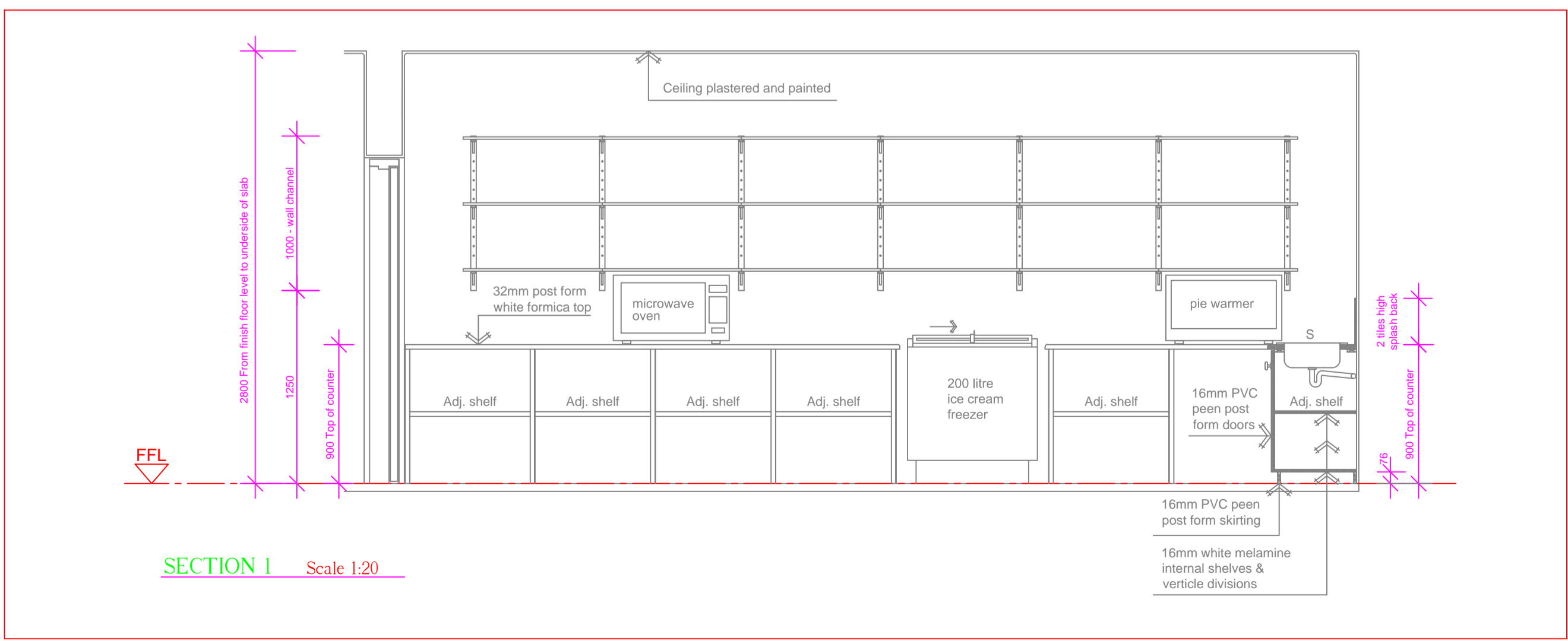
**P 02**  
 SDB  
 Ground  
 General  
 2.5mm<sup>2</sup> Cu-L-N  
 +1.5mm<sup>2</sup> Cu-E

**P 01**  
 SDB  
 Ground  
 General  
 2.5mm<sup>2</sup> Cu-L-N  
 +1.5mm<sup>2</sup> Cu-E

**PP 03**  
 SDB  
 Ground  
 General  
 2.5mm<sup>2</sup> Cu-L-N  
 +1.5mm<sup>2</sup> Cu-E



**"AS BUILT"**

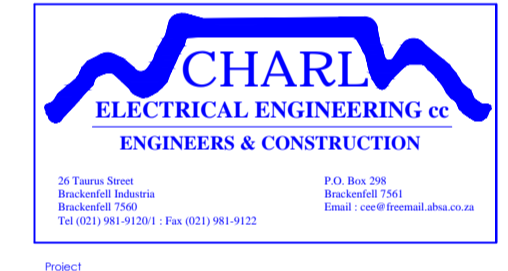


**LEGEND**

[Symbol]	SINGLE SOCKET OUTLET AT 300mm AFFL. OR AS SHOWN
[Symbol]	DOUBLE SOCKET OUTLET AT 300mm AFFL. OR AS SHOWN
[Symbol]	SINGLE PHASE ISOLATOR AT 300mm AFFL. OR AS SHOWN
[Symbol]	THREE PHASE ISOLATOR AT 300mm AFFL. OR AS SHOWN
[Symbol]	TELEPHONE OUTLET AT 300mm AFFL. OR AS SHOWN
[Symbol]	TV OUTLET AT 300mm AFFL. OR AS SHOWN
[Symbol]	SWIPE CARD READER AT 1200mm AFFL.
[Symbol]	DATA OUTLET AT 300mm AFFL. OR AS SHOWN
[Symbol]	MUSIC SYSTEM OUTLET BOX AT HEIGHT AS SHOWN

**WYSKINSREVISIONS**

WYSKINS REVISION	BESKRYWING	GOEDG. APPROV.	DATUM
1	OPSPERKE/REVISION	CS	18/10/2004

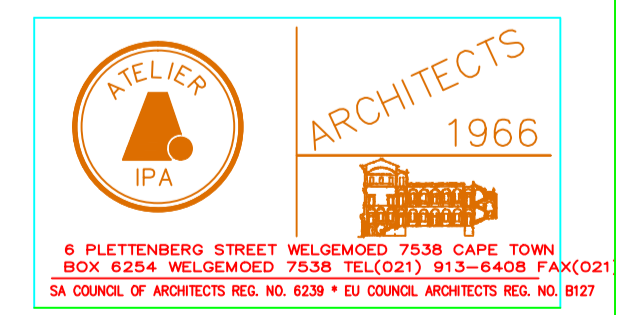
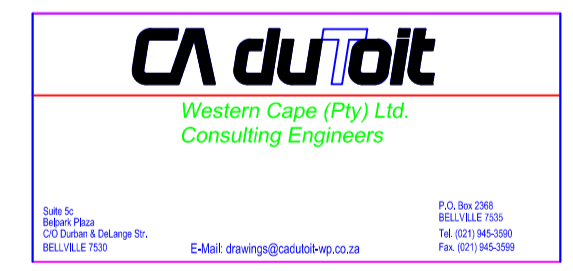


Proposed Student Hostel  
 On Erf 14515 Stellenbosch  
 University  
 Project S40

Client: UNIVERSITY OF STELLENBOSCH  
 Drawing: Power Layout  
 GROUND FLOOR "SNOEPIE"  
 GOEDGEMERK/APPROVED - CA DU TOT WESTER CAPE (PTV) LTD.  
 GOEDGEMERK/APPROVED - UNIVERSITEIT STELLENBOSCH UNIVERSITY

SCALE/SCALE	REV/DIBOT	WORKING	DATE
AS SHOWN	CF	CS	18/10/2004

PROJECT NO: CEE.2003.11  
 DRAWING NO: CEE.2003.11.08D  
 REV/REV: "AS BUILT"



PROJECT TITLE: PROPOSED STUDENT HOSTEL ON ERF 14515 FOR STELLENBOSCH UNIVERSITY  
 DRAWING TITLE: DETAILS TO "SNOEPIE"

DATE: 25 JULY 2004  
 SCALE: AS SHOWN  
 DRAWING NUMBER: HOSTEL / 58  
 REV. 1  
 THIS DOCUMENT IS COPYRIGHT OF THE ARCHITECT